

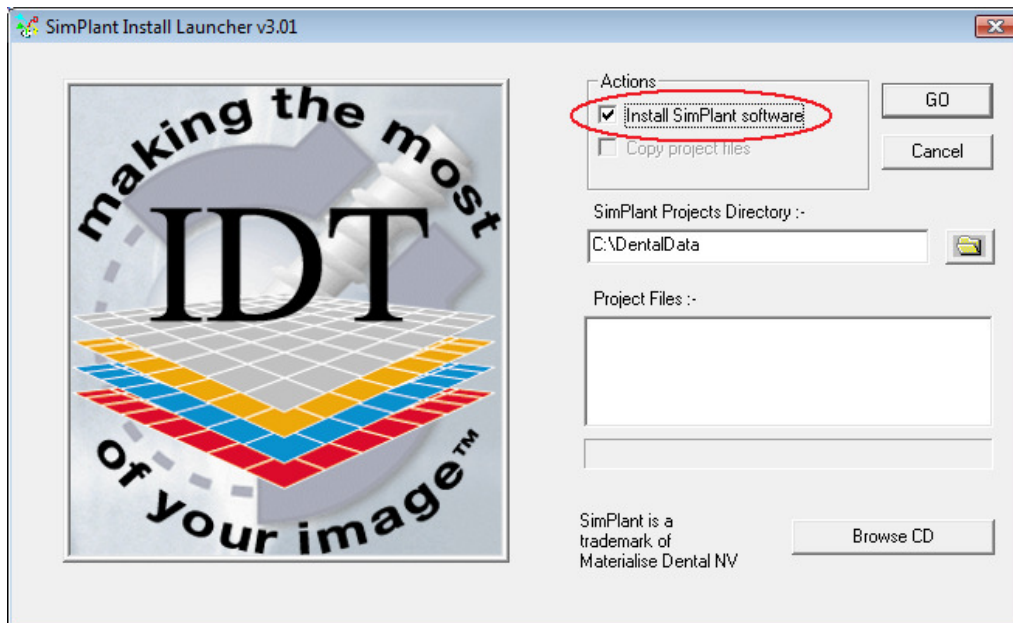
# How to install Simplant View or OneShot from a CD you received from IDT Scans

## To Install Simplant View or Simplant OneShot

### Step 1

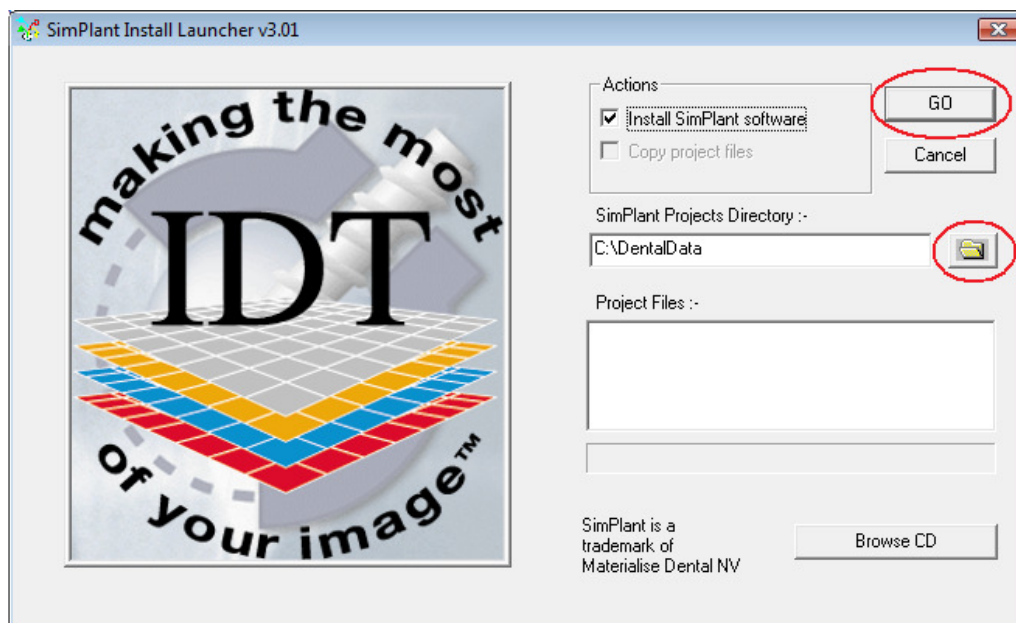
Insert CD into drive.

The IDT Scans Simplant Installer will launch:



Tick the box next to “Install SimPlant software” if you want to install Simplant View or OneShot on your computer. Leave it unticked if you already have it on your computer.

### Step 2



We recommend storing your Simplant Projects in the **C:\DentalData** folder. However, you may browse to a different folder using the button shown.

Please click the **GO** button when you are ready to proceed.

### Step 3

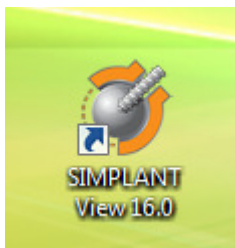
The Simplant files will be copied to the folder usually selected (usually **C:\DentalData**)

### Step 4

The Simplant software may take some time to start installing. Please wait till it starts installing, then follow the onscreen instructions.

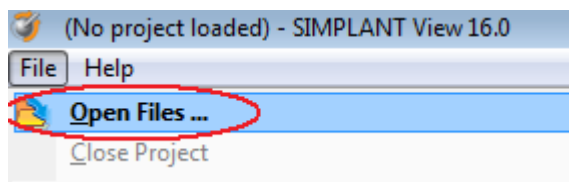
### Step 5

When installation is complete you will see a Simplant icon on your Desktop. Launch Simplant by double-clicking the Simplant icon.



### Step 6

From the **File** menu select **Open Files ...**



### Step 7

A dialog box will open and you will see your patient listed. Double-click on your patient to view the images.