

# How to send images to IDT PACS

## from i-CAT 17-19 and CB-500 Scanners

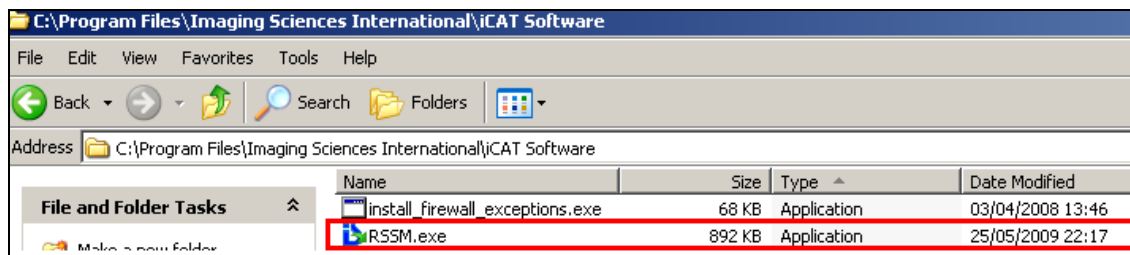
### Step 1

Check if RSSM is already running by checking the icon in the Notification Area as shown below. If it is already running, double click the RSSM icon to open the dialogue box.



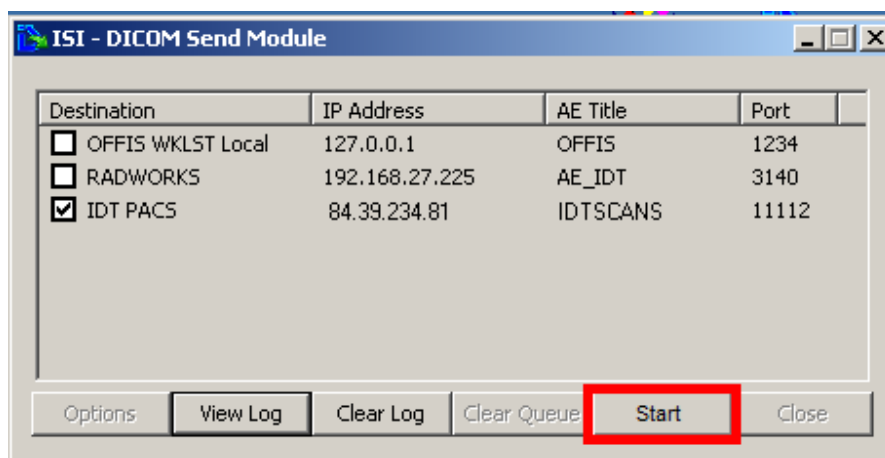
### Step 2

If RSSM is not already running, navigate to C:\Program Files\Imaging Sciences International\iCAT Software and double click on RSSM.exe as shown below:



### Step 3

RSSM may minimize to the Notification Area again, in that case double click the RSSM Icon in the Notification Area to open the dialogue box:



#### Step 4

Check that the IDT PACS destination is showing and the tick box is selected. The data will be sent to the destination that is ticked. If IDT PACS is not showing it may need to be configured (see separate document).

#### Step 5

If “Stop” is showing then RSSM is already running.  
If “Start” is showing press “Start” to start RSSM.

You can see the datasets that are currently being sent (and have already been sent) by clicking “View Log”.

You may minimize the dialogue box using the icon shown.

#### Step 6

Launch **i-CATVisionQ** if not already running. Right click on the reconstructed scan (CT) to be sent and click the “Send to Remote” option as shown below.  
**DO NOT SEND RAW DATA.**

